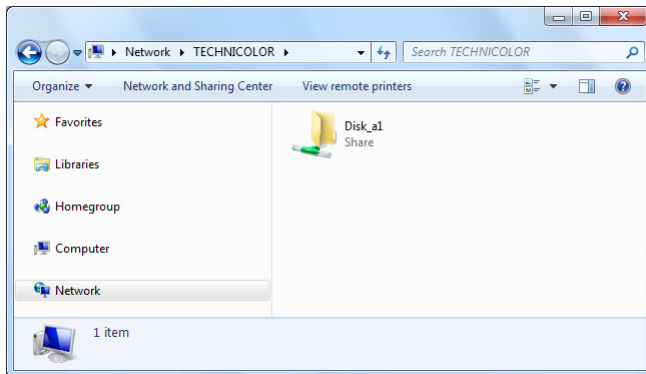


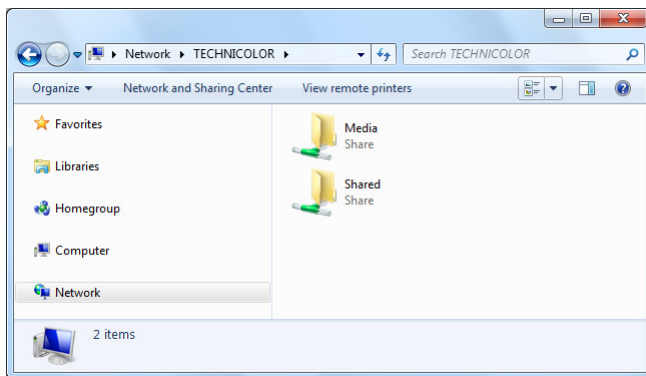
- 3 An Explorer windows appears. The storage devices that are attached to your Technicolor Gateway are listed as folders.



If the storage device has multiple partitions an index number will be added at the end (for example: **Disk\_a1** and **Disk\_a2**).

If multiple storage devices are inserted the first one is listed as **Disk\_a1**, the second one as **Disk\_b1**, and so on.

If the partition is a managed partition, only the **Media** and **Shared** folders of the managed partition are displayed:



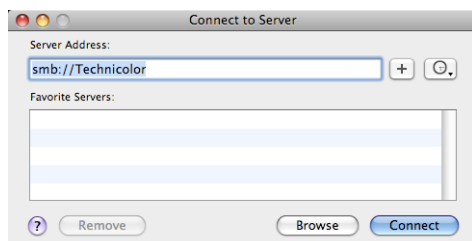
For more information on managed partitions, see “7.4 Managing your Shared Content” on page 56.

- 4 If you plan to frequently use this folder, it might be useful to map this folder as a network drive. For more information, see the help of your operating system.

## Accessing the shared content on Mac

Proceed as follows:

- 1 On the **Go** menu, click **Connect To Server**.
- 2 The **Connect To Server** window appears.



In the **Server Address** box, type **smb://<server name>**, where <server name> is the Server Name you assigned to your USB storage device (default: **smb://Technicolor**).



If you did not provide a server name, type **smb://192.168.1.253**.