

Fixing slow youtube uploads.

This problem had been dogging me for around four months, YouTube were hapless and rude in that they never offered an idea and mostly never replied. The Google forums while engaging did not provide an answer, only confirmation that many others were suffering the same problem.

Not until I joined my ISP's support forum (PlusNet) did I finally make progress with this most annoying issue.

First of all, my system details:

Windows XP Home 32bit.  
Plusnet ISP  
AV Kaspersky Internet Securities 2013.

One of the first things to check is your MTU, this is the size of the bits of data that your computer sends in a upload, you don't need to understand it!

I used this Microsoft fix it tool to check and make sure.

<http://go.microsoft.com/?linkid=9763077>

When the little box opens up make sure to put 1492 as your MTU and then click next.

After this open up Kaspersky settings (other firewalls will be similar)

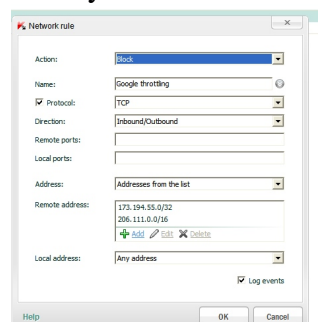
Under 'web antivirus' click 'exclusions' and add the following urls:

<http://www.youtube.com/>

<http://www.youtube.com/upload>

[www.youtube.com/upload](http://www.youtube.com/upload)

Then under firewall open settings – packet rules – click add and enter the information exactly as shown:



This blocks some pesky Google connections that can slow your videos (obtained from on-line research, carry out at own risk)

Then open up a command prompt (the old dos screen) and type or copy and paste with your mouse the following code:

***netsh int ip reset logfile.txt***

Then reboot your machine and try again.

This made my uploads go from 9 hours for 150mb to just on 13 mins

Good luck. <http://www.youtube.com/user/mikesndbs>